



# MV3000, MV4000

MEINSBERG TRANSMITTER

The transmitter series MV3000 and MV4000 are excellently suited for continuous measurements of one or more parameters in connection with process control units, data loggers, -printers or visualisation systems. They are characterised by high flexibility and simple handling. Calibrations can be done directly on transmitter. An additional display on MV4000 simplifies measuring value checks, calibrations and makes each transmitter to a stand-alone measuring instrument.



## Applications

- Water treatment
- Water quality monitoring systems
- Process monitoring
- Process control

## Features

- cost-efficient measurement of process parameters
- simultaneous temperature measurement and compensation
- 2 free scaleable analogue outputs and 1 relay output
- modular DIN rail mounted case

MV4000:

- display for measuring values and clear calibration instructions
- Firmware update via PC interface

# MV3000, MV4000 MEINSBERG TRANSMITTER



Up to 32 transmitter series MV3000 and MV4000 can be connected to one network.

## pH value

MV3010 pH -2.00...16.00  
 MV4010 electrode voltage  
 -2000...2000 mV  
 -10.0...130.0 °C

## Redoxpotential

MV3015 -2000...2000 mV  
 MV4015 -10.0...130.0 °C

## Concentration (ISE)

MV3016 Ion concentration correlate to sensor specification and calibration  
 MV4016 -2000...2000 mV  
 -10.0...130.0 °C

## Conductivity (2 electrode cells)

MV3020 0...200.0 μS/cm, 0...2000 μS/cm  
 MV4020 0...20.00 mS/cm, 0...100.0 mS/cm  
 -10.0...130.0 °C

## Conductivity (4 electrode cells)

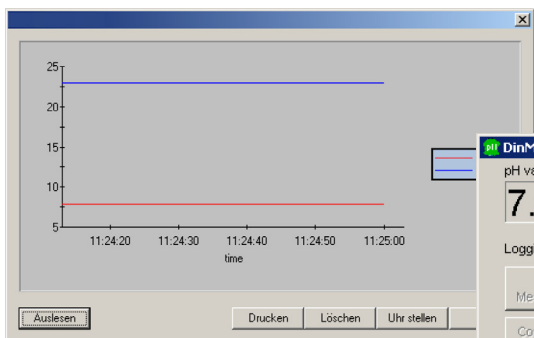
MV3025 0...200.0 μS/cm, 0...2000 μS/cm  
 MV4025 0...20.00 mS/cm, 0...500.0 mS/cm  
 -10.0...130.0 °C

## Dissolved oxygen

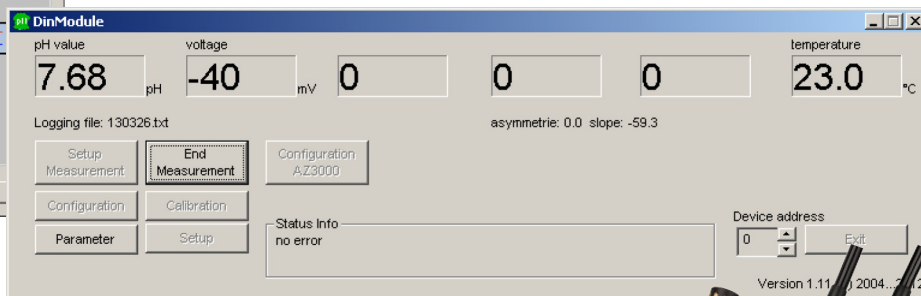
MV3030 0...200.0 %  
 MV4030 0...20.00 mg/l  
 -10.0...130.0 °C

## Chlorine

MV3060 Input 0(4)...20 mA  
 MV4060 free programmable slope / concentration  
 -10.0...130.0 °C

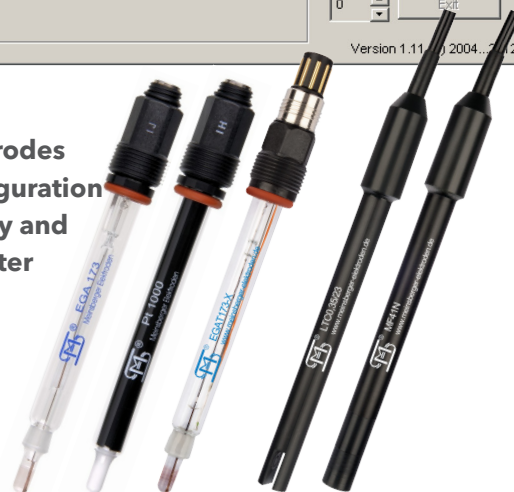


The software DinModule and the USB interface cable features configuring with logging of configuration parameters, calibration as well as displaying and recording of measuring values directly on PC using USB interface.



**Many Meinsberg Electrodes with appropriate configuration can be connected easily and directly to the transmitter**

- plug head with separate connection cable
- fixed cable version



## Xylem Analytics Germany Sales GmbH & Co. KG

Sensortechnik Meinsberg  
 Meinsberg, Kurt-Schwabe-Str. 6  
 D-04736 Waldheim / Germany

Tel +49.34327.623.0  
 Fax +49.34327.623.79

info@meinsberg.de  
 www.meinsberg.de